

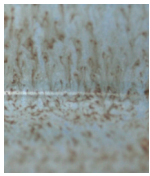


Cone 6 Glaze Color Chart

All of our cone 6 glazes are dinnerware-safe when applied and fired appropriately. For additional information, descriptions, layering advice and photo galleries, visit us at www.stonemountainclay.com. (3/2011)



401 Crystal Clear



403 Blue Sage



404 Celerydon



405 Daiquiri Freeze



406 Frosted Black Licorice



407 Buttered Popcorn



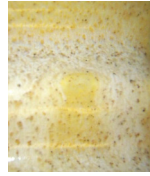
408 Egg Cream



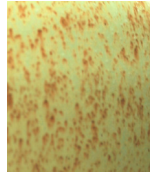
409 Tomato Bisque



410 Caramel Corn



411 Butterscotch Spice



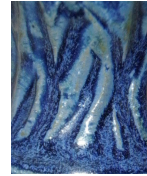
412 Mint Chocolate Chip



413 Vanilla Bean



414 Ginger Mist



415 Mediterranean Sea Salt



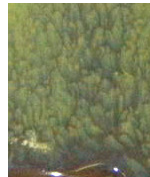
416 Milk Chocolate



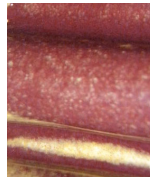
417 Polar Frost



418 Liquid Smoke



419 Hydrangea



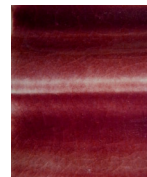
420 Gilded Merlot



421 Champagne Toast



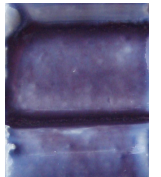
429 Pink Grapefruit Juice



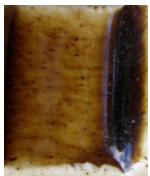
430 Cranberry Juice



431 Vanilla Icing



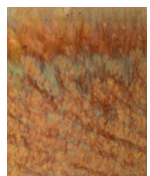
440 Violet, You're Turning Violet!



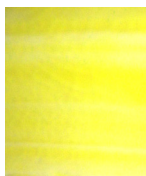
441 Root Beer



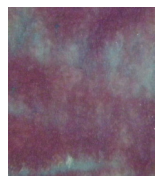
442 Emerald



443 Topaz



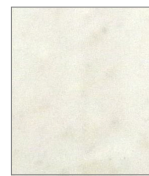
444 Canary



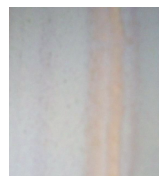
445 Amethyst



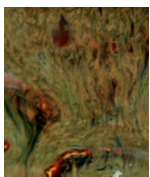
447 Sapphire



451 White Russian



461 Rose Quartz



462 Leopard Agate



463 Turquoise



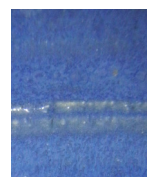
464 Azurite



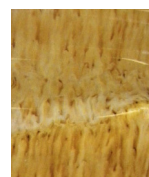
465 Peridot



467 Moss Agate



468 Electric Blue Slate



470 Praline Marble



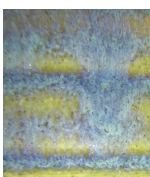
471 Tiger's Eye



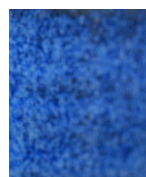
472 Ruby Slippers



473 Edamame



490 Mardi Gras



501 Blue Jeans

**Stone Mountain Clay
& Glaze Company, LLC**
4744F North Royal Atlanta Dr, Tucker, GA 30084

www.stonemountainclay.com
info@stonemountainclay.com

770.986.9011
404.492.7190(FAX)

Become a fan on

facebook

Retail showroom and production center open:

Monday, 10 a.m. - 3 p.m.
Tuesday-Friday, 10 a.m. - 5 p.m.
Saturday, 10 a.m. - 2 p.m.